

G732



4-LOBE HANDWHEEL WITH THREADED STUD

Material:

Reinforced polyamide. Oils and greases resistant.

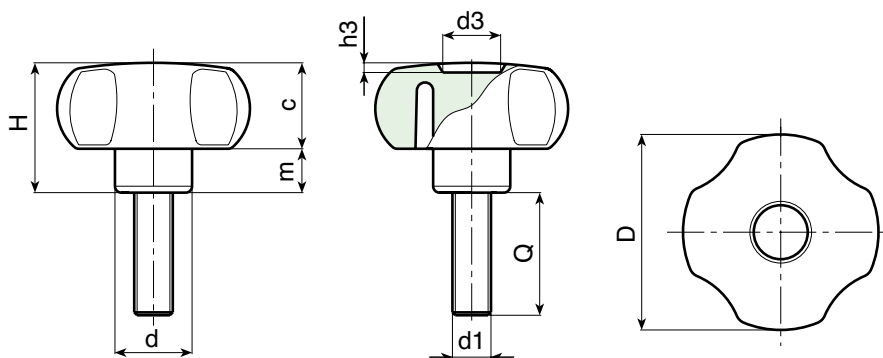
Surface: Satin.

Colour: Black (RAL 9011).

Main Insert: Zinc plated steel threaded stud (tolerance 6g).

SPECIAL REQUESTS:

- It is possible to supply inserts in different lengths or by special design, on request and for quantities.
- It is possible to supply inserts in different materials, on request and for quantities.
- It is possible to supply colours as shown in the table on page G-27, on request and for quantities.



art.	D	H	d	c	m	d3	h3	LM	d1 6g	Q	g
G73220.TM04X..01	21	14	11	8,5	5,5	8	1,5	50	M04	10-16-20	4-4,5-5
G73220.TM05X..01	21	14	11	8,5	5,5	8	1,5	50	M05	10-16-20-30-50	6-6,5-7-8-10
G73220.TM06X..01	21	14	11	8,5	5,5	8	1,5	50	M06	10-16-20-30-40	6,5-7,5-8-9,5-11
G73225.TM04X..01	26	16	12	10	6	10	1,5	95	M04	A.R.	-
G73225.TM05X..01	26	16	12	10	6	10	1,5	95	M05	10-16-20-25	8-8,5-9-9,5
G73225.TM06X..01	26	16	12	10	6	10	1,5	95	M06	10-16-20-25-30	10-11-13-14-15
G73225.TM08X..01	26	16	12	10	6	10	1,5	90	M08	16-20-30-40	14-16-20-24
G73230.TM05X..01	30	23	15	13,5	9,5	12	2	90	M05	20-30	13-14
G73230.TM06X..01	30	23	15	13,5	9,5	12	2	90	M06	10-16-20-30-40-50	14-15-16-18-20-22
G73230.TM08X..01	30	23	15	13,5	9,5	12	2	90	M08	16-20-30-40-50	20-22-25-28-31
G73230.TM10X..01	30	23	15	13,5	9,5	12	2	90	M10	20-50	25-43
G73240.TM06X..01	40,5	29,5	15,5	18,5	11	12	3	100	M06	10-16-20-30-40	23-24-26-28-30
G73240.TM08X..01	40,5	29,5	15	18,5	11	12	3	100	M08	16-20-30-40-50	28-31-34-37-40
G73240.TM10X..01	40,5	29,5	17,5	18,5	11	12	3	100	M10	20-30	38-43
G73240.TM12X..01	40,5	29,5	21	18,5	11	12	3	100	M12	A.R.	-
G73250.TM06X2001	49	32	20,5	21,5	11	14,5	2,5	120	M06	20	43
G73250.TM08X..01	49	32	20,5	21,5	11	14,5	2,5	120	M08	16-20-30-40-50-60	49-51-54-57-60-64
G73250.TM10X..01	49	32	20,5	21,5	11	14,5	2,5	120	M10	15-20-30-40-50-60	55-58-63-68-72-77
G73250.TM12X..01	49	32	20,5	21,5	11	14,5	2,5	120	M12	30-50	77-90
G73260.TM08X..01	59	40	23	25	15	24	4	120	M08	16-20-30-40-50	73-76-79-81
G73260.TM10X..01	59	40	23	25	15	24	4	120	M10	20-30-60	79-84-100
G73260.TM12X..01	59	40	23	25	15	24	4	120	M12	25-30-40-50-60	94-97-104-111-119
G73260.TM14X..01	59	40	23	25	15	24	4	120	M14	A.R.	-
G73280.TM10X..01	79	41	30	24	17	21	3	80	M10	A.R.	-
G73280.TM12X..01	79	41	30	24	17	21	3	80	M12	25-45-50-60	115-132-135-142
G73280.TM14X..01	79	41	30	24	17	21	3	80	M14	A.R.	-
G73280.TM16X..01	79	41	30	24	17	21	3	80	M16	A.R.	-

LM = Maximum mouldable length.

It's possible to have different lengths, by customers requests. Minimum 100 pieces.