

# G730



## 4-LOBE HANDWHEEL WITH THREADED FEMALE INSERT

**Material:**

Reinforced polyamide. Oils and greases resistant.

**Surface:** Satin.

**Colour:** Black (RAL 9011).

**Main Insert:**

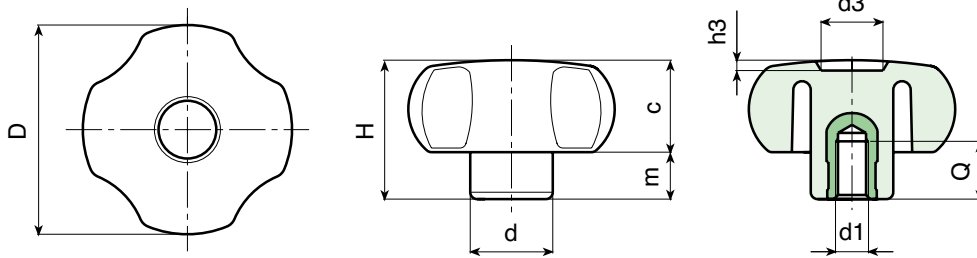
Brass blind threaded bush (tolerance 6H).

(\*) Zinc plated steel blind threaded bush (tolerance 6H).



**SPECIAL REQUEST:**

- It is possible to supply the inserts in different materials, on request and for quantities.
- It is possible to supply colours as shown in the table at pag. G-27, on request and for quantities.



art.	D	H	d	c	m	d3	h3	d1 6H	Q	⚖ g
G73020.TM0401	21	14	11	8,5	5,5	8	1,5	M04	13	5
G73020.TM0501	21	14	11	8,5	5,5	8	1,5	M05	13	5
G73020.TM0601	21	14	11	8,5	5,5	8	1,5	M06	13	5
G73025.TM0401	26	16	12	10	6	10	1,5	M08	7	6
G73025.TM0501	26	16	12	10	6	10	1,5	M05	7	6
G73025.TM0601	26	16	12	10	6	10	1,5	M06	7	7
G73025.TM0801	26	16	12	10	6	10	1,5	M08	7	8
G73030.TM0501	30	23	15	13,5	9,5	12	2	M05	13	12
G73030.TM0601	30	23	15	13,5	9,5	12	2	M06	10	12
G73030.TM0801	30	23	15	13,5	9,5	12	2	M08	16	14
G73030.TM1001	30	23	15	13,5	9,5	12	2	M10	16	14
G73040.TM0501	40,5	29,5	15,5	18,5	11	12	3	M05	13	21
G73040.TM0601	40,5	29,5	15,5	18,5	11	12	3	M06	10	21
G73040.TM0801	40,5	29,5	15	18,5	11	12	3	M08	14	22
G73040.TM1001	40,5	29,5	17,5	18,5	11	12	3	M10	13	26
G73040.TM1201	40,5	29,5	21	18,5	11	12	3	M12	11	30
G73050.TM0601	49	32	20,5	21,5	11	14,5	2,5	M06	10	35
G73050.TM0801	49	32	20,5	21,5	11	14,5	2,5	M08	14	42
G73050.TM1001	49	32	20,5	21,5	11	14,5	2,5	M10	13	43
G73050.TM1201	49	32	20,5	21,5	11	14,5	2,5	M12	17	48
G73060.TM0801	59	40	23	25	15	24	4	M08	15	60
G73060.TM1001	59	40	23	25	15	24	4	M10	14	62
G73060.TM1201	59	40	23	25	15	24	4	M12	18	67
G73060.TM1401	59	40	23	25	15	24	4	M14	19	70
G73060.TM1601	59	40	23	25	15	24	4	(*) M16	17	82
G73080.TM1001	79	41	30	24	17	21	3	M10	14	88
G73080.TM1201	79	41	30	24	17	21	3	M12	16	88
G73080.TM1401	79	41	30	24	17	21	3	M14	19	97
G73080.TM1601	79	41	30	24	17	21	3	(*) M16	17	109
G73080.TM2001	79	41	30	24	17	21	3	(*) M20	16	115